



GEMINI

Gemini Corporation NV
Antwerp, Belgium

Circular Economy Market Makers

Giving a second life to
2 million tonnes of
material annually

The World is a Small Village

We operate through 47
offices & 50 warehouses
in 36 countries

GemCorp Recycling & Technologies

Solving the problem of
waste collection while uplifting
lives in developing economies

Awards & Ratings

From the best
organisations
in the world,
appreciating our
work & efforts

Sharing with Society

Adopted 12 villages for
medical need & built
2 schools for 400 students

MusicRecycle

Raising awareness for recycling
& the environment using music
as a messenger

COMPANY PROFILE

Office Locations

*The whole world is
a small village*

*47 Offices
in 36 Countries*



About Gemini

1989

Gemini Corporation NV was founded

99 Credit Rating Achieved



500+ Professionals Worldwide

Headquartered in **Belgium**

4A1 Credit Rating



Board member of



Member of



Official Supporter



Global Treaty on Plastic Pollution signed at UN Environment Assembly.

Core Competencies



Collection, Recycling, Sourcing, Logistics, Reprocessing, Finance & Documentation, Warehousing & Sorting Facilities.

We operate through 47 owned or affiliate offices with 50 warehouses in 36 countries.

Exporting over **100,000 TEUs** (Twenty-foot Equivalent Unit) per annum to and from more than 75 countries.

The group collects over **400,000 tonnes of recyclable plastics** from over 500 locations in 35 countries for reprocessing at over 250 plants in 40 countries. Apart from plastics, we give a second life to over **4 Billion pounds of rubber, metals and paper including 50 Million tyres, 300,000 cars and 5 Million refrigerators.**

Core Idea - Circular Economy

1 Million Tonnes

of plastic waste is generated globally every day

By 2050

12 Billion Tonnes

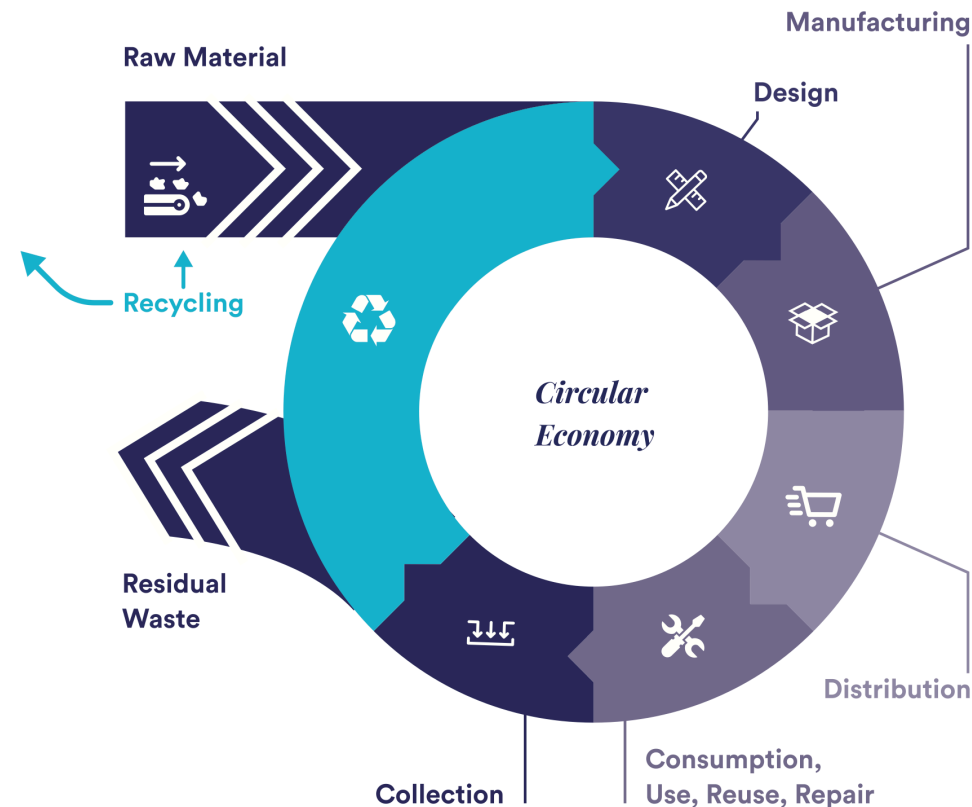
of plastic waste will be generated

2000 Truck loads

of plastic waste every hour

Less than 10%

of that will be recycled





**A PERFECT PARTNERSHIP
BETWEEN PEOPLE,
PLANET AND PROFITS**

Keep turning to know more

Chairman

Surendra Patawari

Gemini Corporation NV

Mr. Surendra Patawari is the Founder and Chairman of Gemini Corporation. Mr. Patawari is based in Antwerp, Belgium, the headquarters of Gemini. Since 1989, under his leadership, Gemini has succeeded in becoming one of the world's leading circular economy market makers. He is very passionate about recycling and also gives great importance to social responsibility.

Gemini Corporation NV

Waterwilgweg 6 2050
Antwerp, Belgium

info@geminiCorp.be
www.geminiCorp.be
+32 (0)3 254 04 14

Mr. Surendra Patawari is a Board Member of the global Alliance to End Plastic Waste (AEPW) and is a winner of several awards, viz. the US President's "E" Award, IERC Honorary Award, Global Business Leader Award (Institute of Chartered Accountants of India), Global Recycler of the Year (MRAI). Mr. Surendra Patawari is amongst the top 4 recyclers in the world as per Recycling International magazine.

He is an active participator in the Global Plastic Treaty and Government policy making decisions regarding Plastics and Circular Economy. He is also a key speaker at the World Economic Forum events and other industry associations like Fortune CEO Initiative, ISRI, BIR, BMR, MRAI, BVSE, ISWA etc.

Mr. Surendra believes in giving back and sharing with society. He has adopted 12 Indian villages for their medical needs. He has built two schools that now educate 400 students. Moreover, he has planted & maintained a green forest of 100,000 trees in the Indian desert.

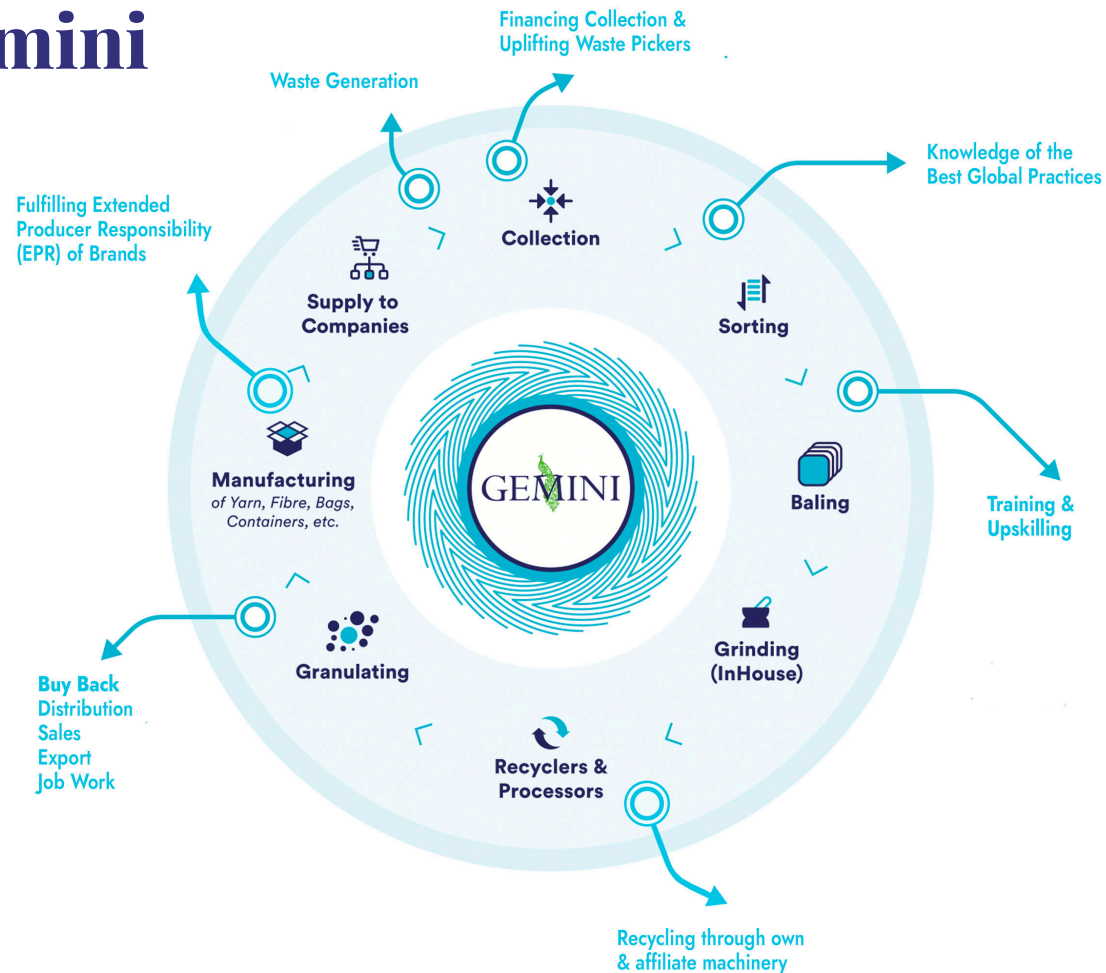
“Waste is not waste until it is wasted. On the contrary, it is a resource full of opportunities.”

Surendra Patawari

Chairman



How Gemini does it?



Roles of Gemini in Circular Economy Value Chain





Our Circular Economy Products

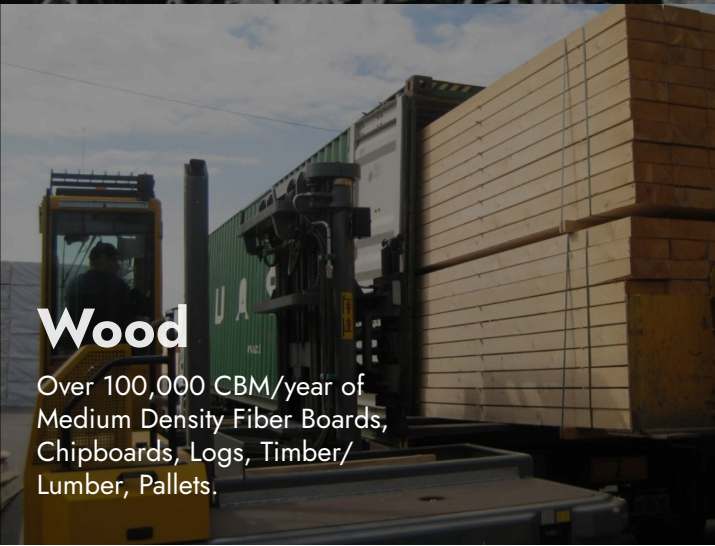
Plastics

Over 400,000 Tonnes/year of recyclable plastics & near Prime Resins, LDPE, PP, PET & HDPE. Global sourcing & supply of Off-Grade & Reprocessed Plastics.



Metals

Over 1,000,000 Tonnes/year of Steel, Aluminium and Copper recycling and supply chain management which includes Raw Materials, Second Choice and Prime.



Wood

Over 100,000 CBM/year of Medium Density Fiber Boards, Chipboards, Logs, Timber/Lumber, Pallets.



Tyre & Rubber

Over 400,000 Tonnes/year of Butyl Inner Tubes, Shredded Tyres, Baled Tyres, Rubber Powder & Crumb Rubber.



Paper

Over 200,000 Tonnes/year of Prime Paper, Production Waste & Stock Lot Paper.



Other Products

Oleo Chemicals, Off Grade Carbon Black, Hay, & Used Containers.



Circular Economy of Plastics

We recycle over 400,000 tonnes of plastics annually

Gemini's foundation started with recyclable Plastics scrap. We created our brand name by standardizing the non-standard plastics scrap industry.

We work on the concept of total recycling, i.e., we supply plastic scrap to recyclers and we buy back their reprocessed output which is a raw material for new products. We also operate through our own recycling plants.

We are a leading international distributor of all Polymers: Polyethylene (PE), Polypropylene (PP), Polyvinyl Chloride (PVC), Polyethylene Terephthalate (PET), Styrene.

Our Recyclable Plastics Portfolio includes HDPE, LDPE, PET, PP, ABS, MLP, etc.

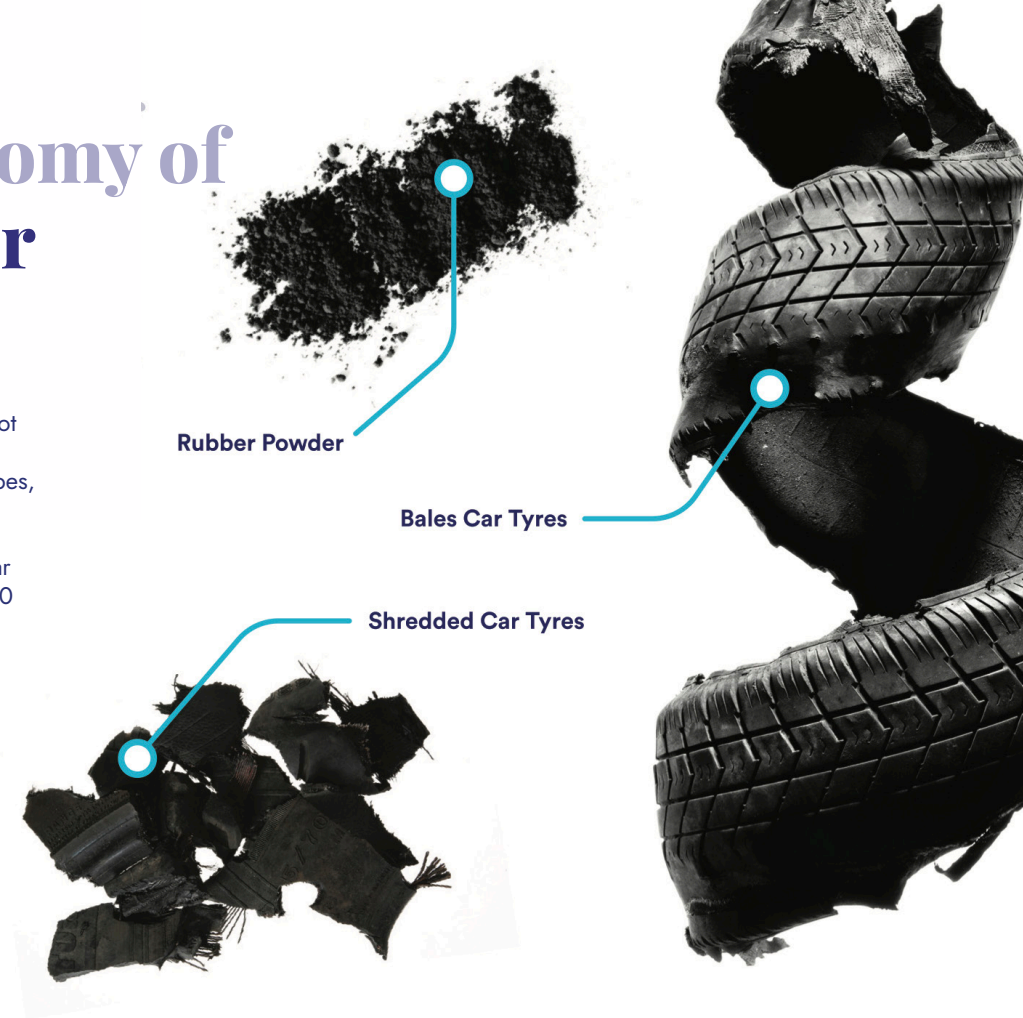
We are regularly buying Off Grade & Reprocessed Plastics from Petrochemical Companies & blending it with plastic scrap to improve the quality of recycled material.

Circular Economy of Tyre & Rubber

We specialize in global buying and selling of Recyclable Rubber. Our products include (but not limited to) Baled Tyres, Shredded Tyres, Rubber Powder & Granulates (Crumb Rubber), Butyl Tubes, Buffing Powder, etc.

We are one of the largest contributors in Circular Economy of Tyres facilitating recycling of over 50 million tyres every year.

We are associated with 500+ recyclers globally exporting Rubber Powder, Granulates, Buffing Powder, Synthetic Rubber & compounds across continents.



Rubber Powder

Bales Car Tyres

Shredded Car Tyres



Circular Economy of Metals

We handle 1 million tonnes of Ferrous and Non-Ferrous metal scrap, Primary and Secondary Steel Flat and Long Products as well as Aluminium Secondary Products such as Ingots, Billets, De-ox, etc.

Stainless Steel scrap products are 200/300/400 series & Zurik.

Long Products include Secondary Wire Roads & Ropes, Round Bars, Shafts Pipes.

Sheets & Plates are all type of HR off Cut Sheets and Heavy plates, CR Galvanized / Electro Galvanized / Alu-zinc / Pre-painted Sheets (Assorted/Un-assorted), Cobble plates, Secondary Con-cast Slabs, Tin plates, Mis-prints, HR Slide Trimmings, etc.

Flat Rolled Products include all types of Secondary, Over Rolling, Prime Excess, Rejected, Defective, Coils & Baby Coils.

Steel Turnings consist of machine Swarf or turning which are bi-products of the ferrous component manufacturing process.

Shredded Steel scrap: Specification as per ISRI 211 grade: Impurities – Maximum 1%.

Tyre Wire is extracted steel wire from tyres.

Non Ferrous Scrap from Compressor and Electric motor.

Aluminium Alloy and Non Alloy Ingots such as ADC12/ LM24/ LM2/ LM6/ 95-98 grades etc.

Circular Economy of Wood

We deal in MDF, Particle boards, Melamine face boards, OSB and other Engineered wood panels, custom cut sizes in Spruce, Pine & their Logs.

We are one of the most regular suppliers of wood panels to the Middle East, South Asia and East Asia. We recycle & process second choice wood to make Pallets used for storage in the Industry.





Circular Economy of Paper

Gemini markets large volumes of secondary stock lot and surplus paper rolls & sheets such as gray paper, newsprint paper, magazine print, release paper, pre-printed kraft paper, silicon coated kraft paper, adhesive, and metalized paper.

We procure directly from the mills and converters. As it is surplus stock, mills choose to work with our company. After procuring the material from them, we store it at our facilities and with our expert logistics team, deliver it to the customer where it can be used in the best way possible.

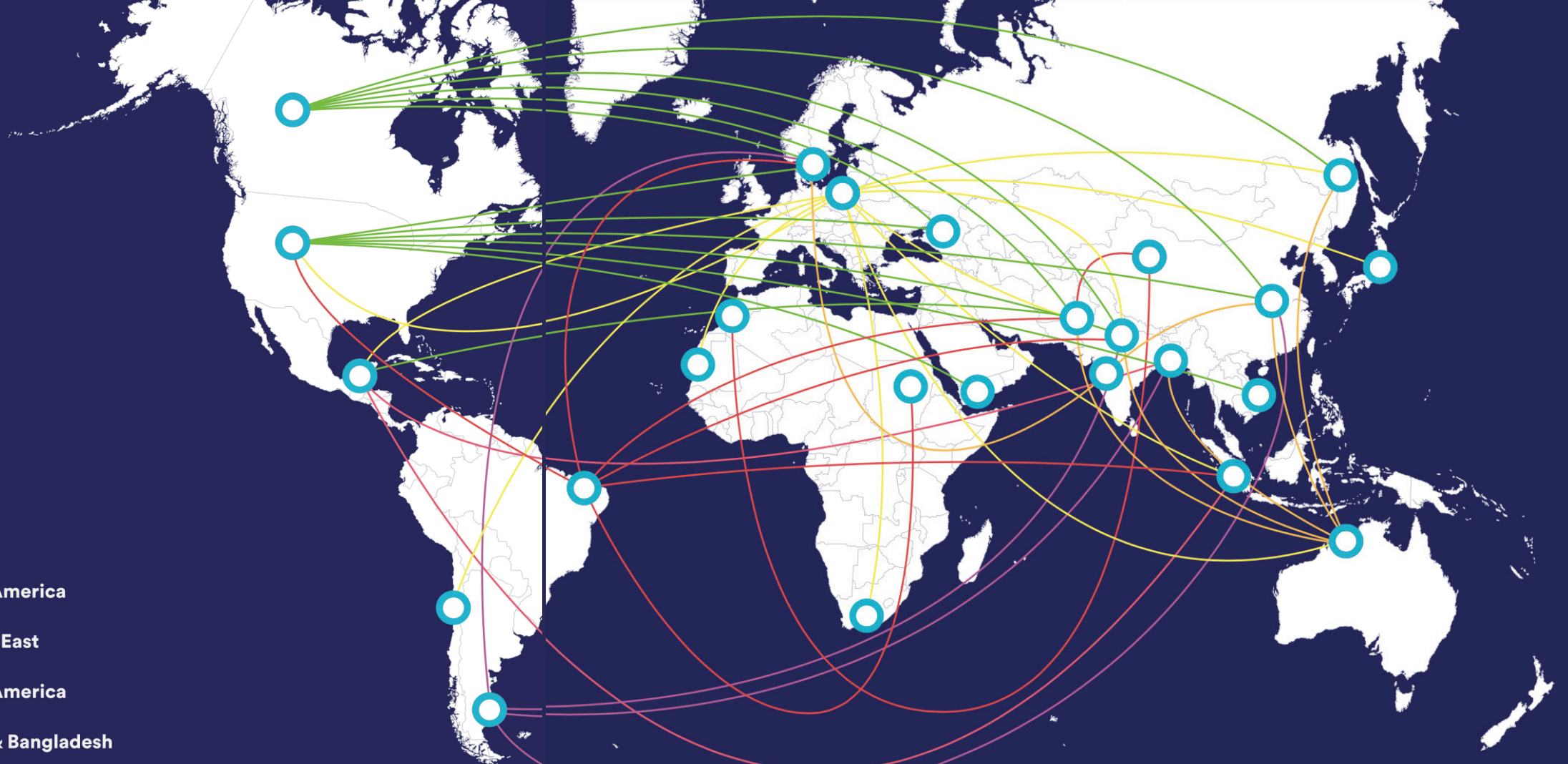
How Gemini Makes the World a Better Place

Plastics Recycling - 400,000 MT Reduction of Carbon Footprint (MT) <i>One MT of Plastics Recycling reduces the CO₂ contributed by 2.5 MT</i>	(400,000 x 2.5)	1,000,000
Metal Recycling - 1,000,000 MT Reduction of Carbon Footprint (MT) <i>One MT of Metal Recycling reduces the CO₂ contributed by 1 MT</i>	(1,000,000 x 1)	1,000,000
Rubber Recycling - 400,000 MT Reduction of Carbon Footprint (MT) <i>One MT of Rubber Recycling reduces the CO₂ contributed by 0.5 MT</i>	(400,000 x 0.5)	200,000
Paper Recycling - 200,000 MT Reduction of Carbon Footprint (MT) <i>One MT of Paper Recycling reduces the CO₂ contributed by 1 MT</i>	(200,000 x 1)	200,000
Total Reduction in Carbon Footprint/Year		2,400,000 MT

Trade Routes

Shipments from and to

- Europe
- Africa
- Australia
- India
- North America
- Middle East
- South America
- China & Bangladesh



Gemcorp Recycling & Technologies

a subsidiary of Gemini Corporation NV



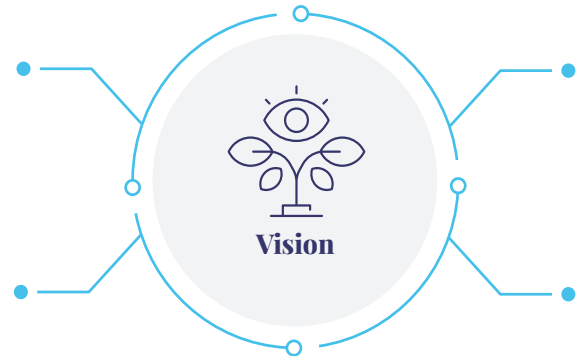
GemCorp seeks to strengthen the circular economy ecosystem in a just and equitable manner with focus on social upliftment, efficient logistics, provision for working capital, education, end-to-end traceability and on-ground action.

Responsible Recycler

Ensure that all waste collected is recycled by GemCorp or through PCB certified recyclers

Investors

Strengthen the value chain through machinery, infrastructure & financial support



Supply Chain Experts

Provide end-to-end transparency & traceability to ensure businesses meet compliance

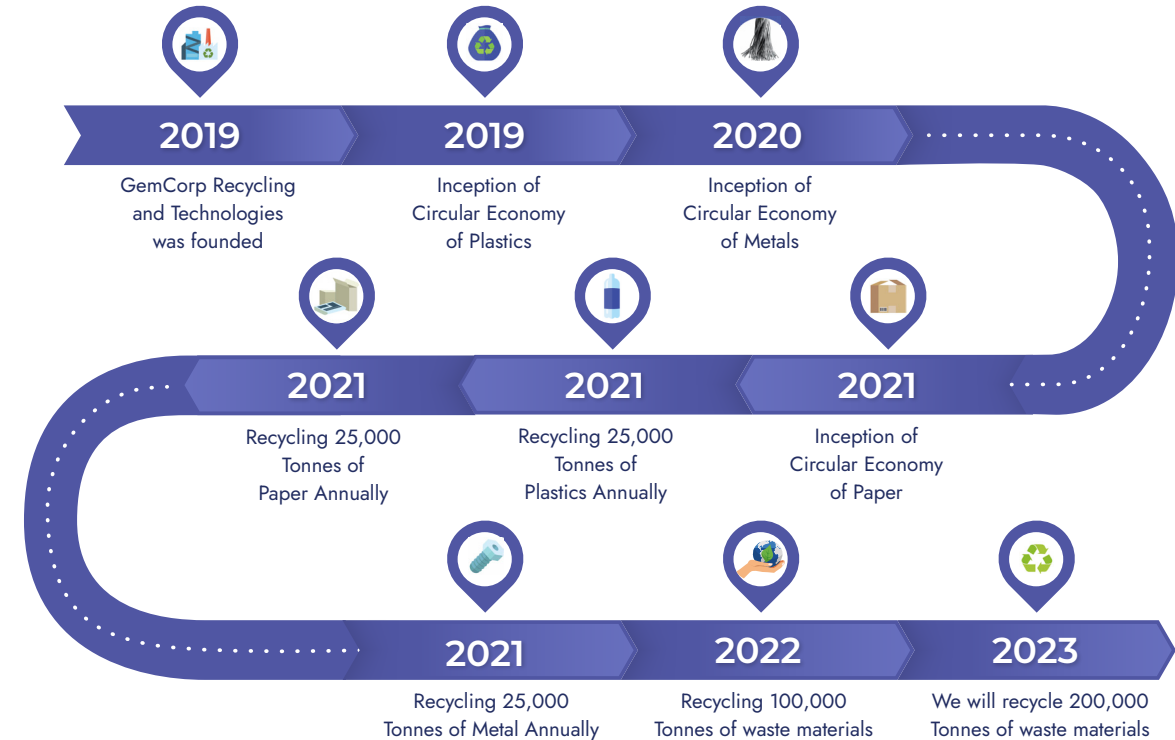
Collection Services

Partnership with small aggregators to big industries for waste collection

End-to-End Circular Economy Services

The GemCorp Journey

“Creating sustainable infrastructure to enable long term recycling solutions in developing economies”



Solving the issue of waste collection by building collection network

Uplifting

10 Families per week

Target to uplift 1000 families

Transparent & Traceable

Supply Chain

No Child Labour, Guaranteed Fair Wages, Sanitation, Health & Safety, Insurance

Collection & Recycling

180,000 Tonnes

of scrap annually

Increasing the monthly collection volume by

4 Times

for local informal collectors

Installing

400 Baling machines

to increase recycling

Setting up

21 Mini recycling plants

in India and helping brands achieve Global Sustainability & Recycling goals

New plant coming up in Gujarat, India

Reclaimers Outreach Program

There are approximately

4 million waste pickers

across India who make a living through picking up, cleaning, sorting and segregating recyclable waste.

GemCorp is committed towards improving the working conditions of waste aggregators by providing better infrastructure and training and ensuring they have proper IDs, bank accounts, and social security benefits.

GemCorp identifies waste collectors and their families through its associated baler facilities and provides them with monthly groceries and toys for their children, clothes, footwear, schoolbooks, etc.

Until now we have uplifted more than

1000 families.



ReMake® - Plastic Credit Program



ReMake
Plastic Credits

Measurable
Verifiable
Transferable

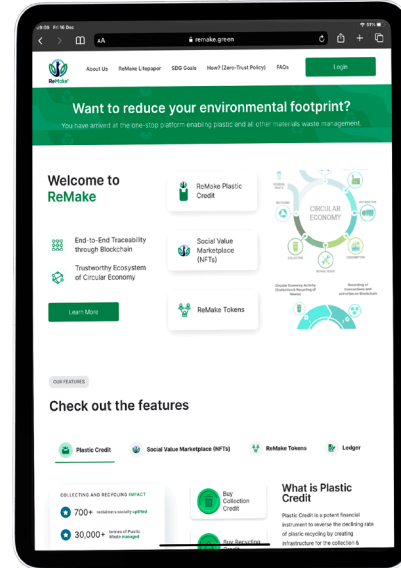
units of plastic that has been collected from the environment or recycled.

The mechanism on which the ReMake program is developed:

- ✔ Technology
- ✔ Social Value Creation
- ✔ Financial Ingenuity
- ✔ ReMake Standards & Governance

©ReMake is a registered trademark of Gemini Corporation N.V.

ReMake Platform for plastic credit program



Blockchain-based ReMake Plastic Credit Certificate



UniGem® - The Digital Marketplace



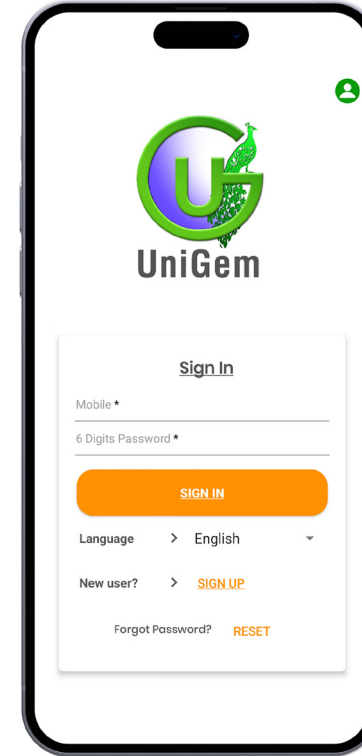
UniGem®

Reliable
Blockchain-based
End-to-end Traceable

marketplace for EPR and Plastic credits.

The blockchain system provides QR-based tracking system and unique hash keys to identify and ensure that the integrity & reliability of the waste collection and recycling data and confirms the circular loop.

©UniGem is a registered trademark of GemCorp Recycling and Technologies Pvt. Ltd.



-  Seller
-  Buyer
-  EPR
-  Traceability
-  Procure Machines
-  No fees

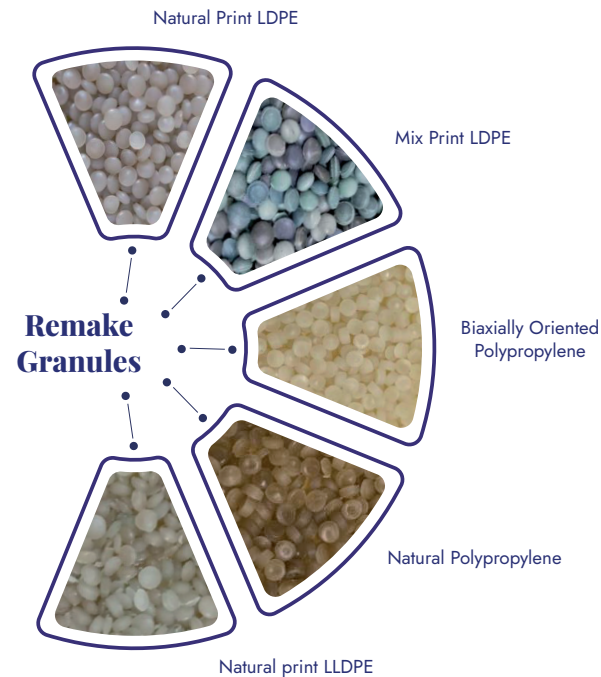
Baling Program



Closing the Loop

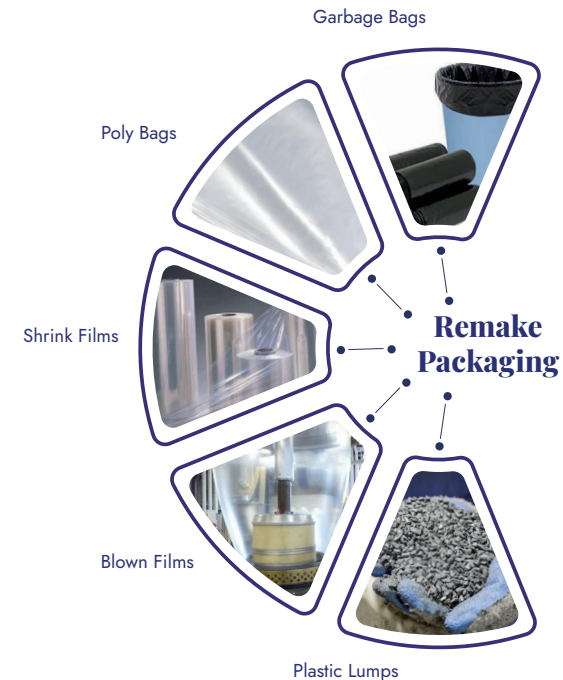
Remake Granules

Clean plastic materials are fed into a cutting device and reduced to tiny fragments. The sliced pieces are placed in an extruder, where they are melted and turned into lumps of granules.



Remake Packaging

GemCorp produces post-consumer recycled based ReMake packaging products and supplies it to institutional clients.



Rural Waste Collection Project

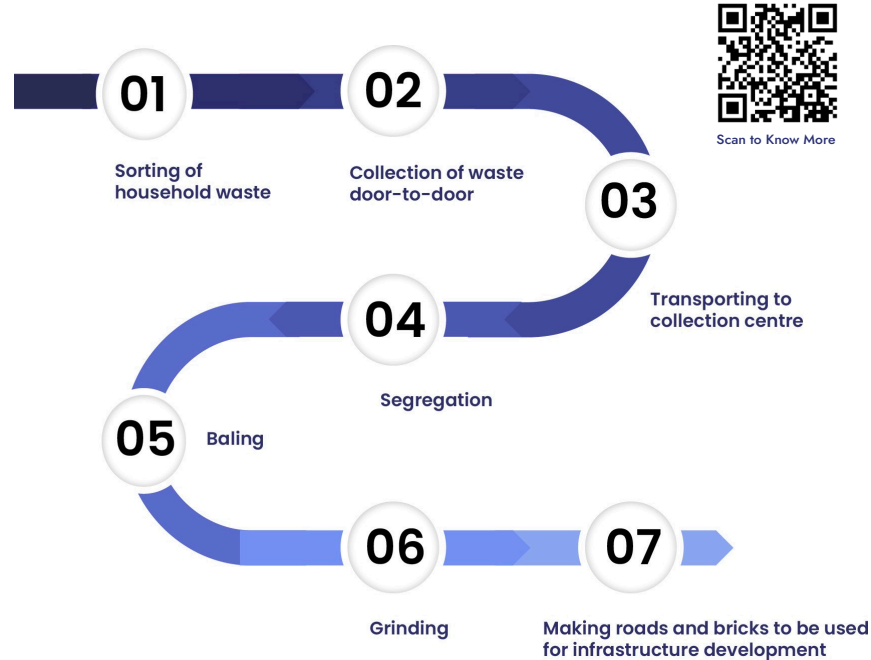
Gemini Corporation as a part of its sharing initiatives, introduced the **village clean-up project** in Momasar, India.

We changed the **mindset of 15,000** residents who are now **aware** of the importance of **collection and segregation at the source**.

We encourage the villagers to segregate their waste at their homes. We have deployed special carriers to transport the segregated waste to our collection centre. It is then sorted and shredded for recycling or processing.

This model is easily scalable and replicable in any part of the developing world.

Gemini has extended this initiative to 12 villages to uplift the lives of 50,000 people.



Awards

Gemini amongst the top 50 global companies of the Fortune 'Change the World List' 2021



President's "E" Award 2019 in the USA

By Commerce Minister — Mr. Wilbur Ross (For our USA affiliate)



IERC Honorary Award, 2020 Austria



Winner of World Economic Forum's "Excellence in Sustainability 2020" Award.



Excellent Enterprise Award

by the Belgian Government



Diversity Champion of the Year Award 2021





Raising awareness for recycling & the environment using music as a messenger

Mission:

To change perceptions & behaviors regarding recycling & educate how individuals can make a difference by making small changes in their daily lives.

How:

Music crosses all barriers & borders, reaching all corners of the world.

Music Festivals:

Creating Awareness experiences

Art Merchandise:

Sourcing sustainable materials

Speaking Up:

Artists waving the flags of sustainability

Get involved:

Join hands with us & partner with MusicRecycle

www.musicrecycle.com

Led by:

Kanika Patawari

Music Producer,
Sustainability Enthusiast &
Daughter of Mr. Surendra Patawari,
Chairman of Gemini Corporation

Every
Action
Counts

Sharing with Society



Health

Providing Medical Care for our 12 adopted villages



Clean Village

Under the aegis of GemCorp India Plastic Free Villages Initiative, we introduced the unprecedented 'Village Clean-up Project'



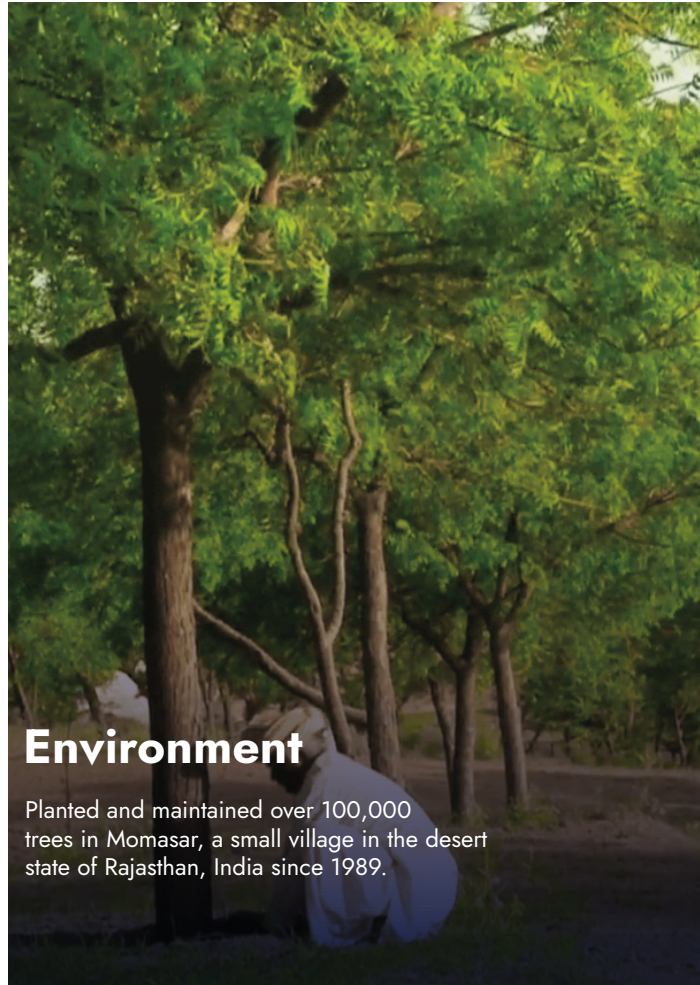
Education

Built and maintaining two schools for free education to about 400 students from underprivileged areas since 1992.



Cultural

Conservation of Cultural Heritage



Environment

Planted and maintained over 100,000 trees in Momasar, a small village in the desert state of Rajasthan, India since 1989.



COVID-19

As a part of our Coronavirus relief activities, Gemini provided essential services and funding to a number of organizations and migrants across the world.

Contact

Gemini Corporation NV

*Waterwilgweg 6 2050
Antwerpen, Belgium*

info@geminiCorp.be

www.geminiCorp.be

+32 (0)3 254 04 14

 www.instagram.com/geminiCorporationNV/

 www.facebook.com/CorpGemini

 www.twitter.com/nvgemini

 www.youtube.com/c/GeminiCorporationNV

 www.linkedin.com/company/gemini-corp-nv/

GEMINI



